

DIVISION OF MULTIPLE SCLEROSIS AND NEUROIMMUNOLOGY NEWSLETTER

Summer Greetings

Dear All,

It's looking like a busy summer is upon us, but we hope you get some summer rest and relaxation!

Here, we share some updates from our Division's faculty and staff.

This summer, we are hosting multiple students, from undergraduates and medical students to research fellows, from the USA to South Korea to Croatia to Denmark. We hope you get to meet some of our new team members along the way. We also had a busy season of faculty lectures, presentations, and talks.

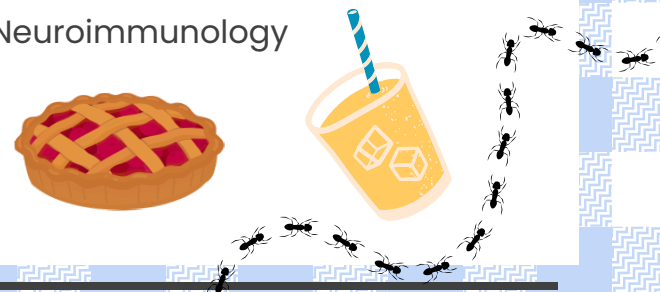
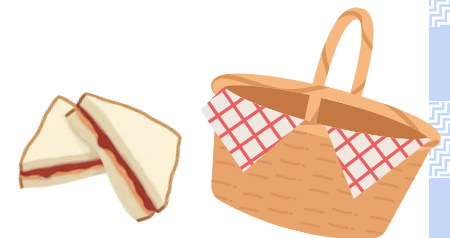
We are starting multiple new research studies to better treat and understand MS, NMO, and related disorders, including a new trial of a Bruton's Tyrosine Kinase inhibitor in MS (principal investigator: Dr. Edie Graham) and a long-term follow-up of Ocrevus Zunovo patients. If you are interested, please read more below.

Our other work continues with your support and participation, and we thank you for your partnerships and engagement.

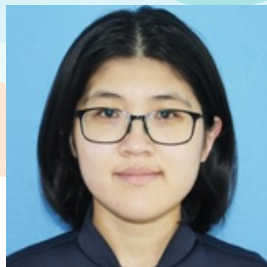
We hope you enjoy the longer days, summer sunshine, and get a good dose of vitamin D along the way.



Sincerely,
Farrah Mateen, MD, PhD
Charles L. Mix Professor of Neurology
Chief, Division of Multiple Sclerosis and Neuroimmunology



Research Team Spotlight



Hailu Fu, PhD

Research Associate
Department of
Biochemistry and
Molecular Genetics
Northwestern University

Can you describe your role in MS research?

"I'm on the experimental side of the MS project. My role is to ensure the generation of high-quality data."

What excites you most about current MS therapies?

"Therapies are evolving beyond symptom control to slowing disease progression. Researchers are exploring new approaches like CAR-T therapy, myelin regeneration and drugs targeting small molecules that have shown potential to slow disability progression. New drug delivery strategies that bypass the blood-brain barrier could target specific brain regions more precisely, reducing the off-target effects."

What's something about your work you find fulfilling?

"I'm doing something meaningful that impacts both the current and future. We hope with cfDNA genetic or epigenetic test, we can identify the lesion that is not detectable by MRI and provide precise therapeutic target, and give preventive treatment guidance before symptoms appear."

What keeps you hopeful in this field?

"What keeps me hopeful is the potential of cfDNA research to transform how MS is managed. If our research on cfDNA can detect and subtype MS earlier and predict the future disease progression, we can treat MS patients with more appropriate care earlier and therefore better slow the neurodegeneration and improve the patients' lives."

Recent Faculty Highlights



Chicago MS Alliance: Pregnancy in MS and NMO

Presented on May 19th,
2026

Dr. Edith Graham

Multiple Sclerosis: Epidemiology, Immunology, Pathology, and Natural History

Presented on
May 28th, 2026



THE CONSORTIUM OF
MULTIPLE SCLEROSIS CENTERS



Dr. Bruce Cohen



Nicholas Vick Faculty Teaching Award

Received June 12th, 2026

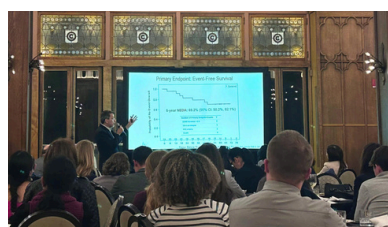
Dr. Dan Tong Jia



Presentation on NMOSD in Chile

Presented on June 12th, 2026

Dr. Roumen Balabanov



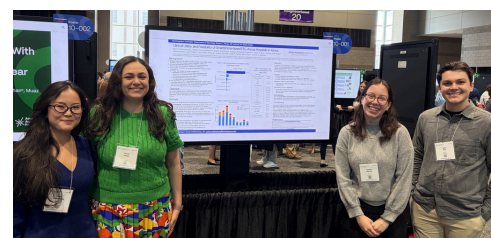
Autoimmune Alliance Dinner

April 21st, 2026

**Hosted by:
Dr. Shailee Shah**

AAN: Abstract Poster and Scientific Platform Session

April 18–22nd, 2026



Nomin Enkhtsetseg

The Mateen lab presented research at the 2026 American Academy of Neurology (AAN) Annual Meeting, sharing work in global neurology with colleagues from around the world!

Join our new studies!

REMASTER: Remibrutinib for Secondary Progressive Multiple Sclerosis (SPMS)

The goal of this study is to evaluate whether an investigational oral medication called remibrutinib can slow disability progression in people living with SPMS. Researchers will study the safety and effectiveness of remibrutinib compared with placebo and assess its impact on disease progression over time. Participants will receive regular clinical evaluations, MRI monitoring, and safety assessments throughout the study.



Contact:
Caroline Gebczak
 caroline.gebczak@northwestern.edu
 630-313-0470



Evaluation of the Safety and Efficacy of a Full-Body Electrostimulation Garment for Individuals With Neurological and Neuromuscular Conditions That Cause Spasticity, Hyperreflexia, and Pain

The goal of the trial is to learn whether a fully remote digital self-management program can reduce fatigue in people living with multiple sclerosis. Researchers will compare the program to a control condition to evaluate its impact on fatigue, quality of life, and daily functioning. Participants will complete study activities remotely, allowing individuals to participate from home.



Contact:
Matt McGuire, PT, DPT
 mmcguire@sralab.org



Ocrevus Zunovo for MS: Mixed Methods

This study is examining the use of Ocrevus Zunovo (OZ), a recently approved subcutaneous (under-the-skin) form of ocrelizumab for people with RRMS and PPMS. Researchers will follow participants for one year to better understand treatment satisfaction, quality of life, and long-term use of OZ. The study will also gather perspectives from patients, caregivers, healthcare providers, and insurance stakeholders to identify ways to improve access to high-efficacy MS therapies and reduce delays in treatment initiation



Contact:
Caroline Gebczak
 caroline.gebczak@northwestern.edu
 630-313-0470

More of Our Studies!

Ublituximab (Briumvi) for Early forms of Relapsing Multiple Sclerosis

The goal of this study is to understand the safety and tolerability of Ublituximab (Briumvi) in people with early relapsing MS. We also want to measure changes in a blood biomarker (neurofilament light chain) before and after treatment.



People with Multiple Sclerosis treated with Ocrelizumab and Glucagon-Like Peptide-1 agonist

We are enrolling individuals with MS who are being treated with Ocrevus and are either currently taking or planning to start a GLP-1 medication. The study aims to better understand how GLP-1 medications may affect MS symptoms, energy, walking ability, and overall quality of life.



Randomized, Blinded Discontinuation Trial of Ocrelizumab in Early Relapsing Multiple Sclerosis (AMS05)

Join a 4-year study exploring how stopping ocrelizumab may affect long-term remission in early multiple sclerosis! We are currently recruiting participants who have recently been diagnosed with relapsing multiple sclerosis to see if people can stay in remission after stopping ocrelizumab.



Plasma Collection for Cell-Free DNA Methylation Profiling in Multiple Sclerosis and Controls

This study hopes to better understand MS by looking at cell-free DNA—tiny genetic fragments in blood that give clues about what’s happening in the body. We are looking for samples from patients with MS and volunteers who do not have MS. This is a one-time study visit that entails a single blood draw.



Contact Information for All of the Studies Listed Above:
Caroline Gebczak OR Audrey Chang
 caroline.gebczak@northwestern.edu OR
 audrey.chang@northwestern.edu
 312-503-5298



Summer Student Spotlights

Luke Kim

Undergraduate Student
Harvard University



HARVARD
UNIVERSITY



Hello, my name is Luke Kim, and I am a summer undergraduate intern here at Northwestern University's Department of Neurology! I am a rising sophomore at Harvard University from Seoul, South Korea, intending to study psychology, economics, global health, and health policy.

I'm here at Northwestern Neurology to learn about multiple sclerosis and hopefully contribute to Dr. Mateen's lab by assisting in scientific writing and facilitating clinical research. This summer, I hope to learn more about the real-world applications of treatments to MS, and also get hands-on experience in the field of research in neuroimmunology.

Outside of school and academics, I like to hike, play my guitar and sing, bake, and try new restaurants and explore the area. It is my first time here in Chicago, so I look forward to trying local spots to eat and explore.

Suvojoti Barua

Medical Student
Touro College of
Osteopathic Medicine



TOURO COLLEGE
OF OSTEOPATHIC MEDICINE



Hello, my name is Suvojoti Barua, and I am a medical student at Touro College of Osteopathic Medicine. I am excited to be spending the month at Northwestern through the National MS Society Medical Student Mentorship Program.

I came to Northwestern to gain more clinical and research exposure to multiple sclerosis and neuroimmunology while learning from physicians and researchers who are deeply involved in advancing care for patients with MS. This summer, I hope to better understand how MS is diagnosed and managed in real clinical settings, how research is being conducted in the field, and gain broader exposure to the field of neurology. In my free time, I enjoy lifting, playing basketball, trying new restaurants, and exploring Chicago while I'm here.

I am grateful for the opportunity to learn from everyone at Northwestern and look forward to making the most of this experience.

On July 22nd, 2026, we will be hosting a **World Brain Day** event with the Center for Global Neurology!

A special PechaKucha event highlighting innovative research, global collaborations, and advances in brain health will be held. Join faculty, trainees, and guests for an afternoon of fast-paced presentations showcasing current work in global neurology.

Email caroline.gebczak@northwestern.edu to receive a **Zoom link!**



RSVP here!

MS Walk Updates



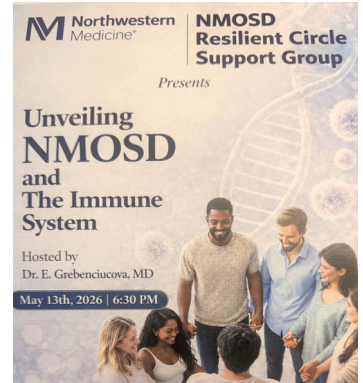
Northwestern Neurology faculty, staff, trainees, patients, and supporters participated in the 2026 Walk hosted by the National MS Society.



The event joined thousands of advocates committed to improving the lives of people living with multiple sclerosis. The event was a great opportunity to connect with the MS community, raise awareness, and celebrate the collective efforts that drive research, advocacy, and support services forward.

Building Community for People Living with NMOSD

The **NMOSD Resilient Circle Support Group**, hosted by **Dr. Elena Grebenciucova**, is a community for individuals living with Neuromyelitis Optica Spectrum Disorder, their caregivers, and loved ones.



Join the community!

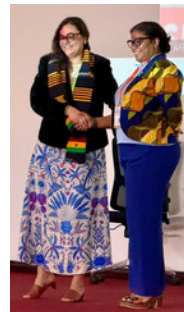
The mission is to provide connection, education, and a safe space where members can share experiences, find strength in one another, and navigate life's challenges together with resilience and hope.

Did you know?

If you take Ocrevus®, Briumvi®, Rituxan®, Kesimpta®, or another immune-modifying MS treatment, protecting yourself from mosquito and tick bites is especially important.

- CDC recommends repellents like DEET, Picaridin, IR-3535, lemon eucalyptus oil, and 2-Undecanone

Don't forget to check for ticks after outdoor activities!



Dr. Mateen presenting in Ghana for the **AFRICTRIMS** conference about **Transverse Myelitis!**



The Mateen Lab is celebrating an exciting time as our **Dr. Mateen** was appointed the **Director of Northwestern's Center for Global Neurology**.

PLEASE VISIT OUR WEBSITE:

<https://www.neurology.northwestern.edu/divisions/msneuroimmunology/index.html>



Support Our Work!

Your generosity helps us accelerate discoveries, expand clinical trials, and improve MS care. You can support MS research at our center by scanning the QR code below or visiting:



<https://feinberg.nu/MSResearch>

Do you want to receive future newsletters? Scan the QR code below to be added to our subscriber list!



<https://tinyurl.com/ms2d8a6x>
